



ID Fan

IPMA INDUSTRY SDN. BHD.

益马工业有限公司

198501004398 (136837-P)



Model: HVLP-400



| Model | Power Requirement | Weight | Dimension (MM) (L x W x H) |
|----------|-------------------|---------|-------------------------------|
| HVLP-400 | 40 HP | 1.5 Ton | 2065 x 2890 x 2440 |

Approximately

www.ipmaindustry.com

Details provided about the properties and usability of the products are purely for information purposes and do not constitute a guarantee of these characteristics. The extent of goods delivered and services performed is determined by the subject matter of the specific contract. No liability accepted for errors or omissions.



Your One Stop Rice Processing And Solution Centre!

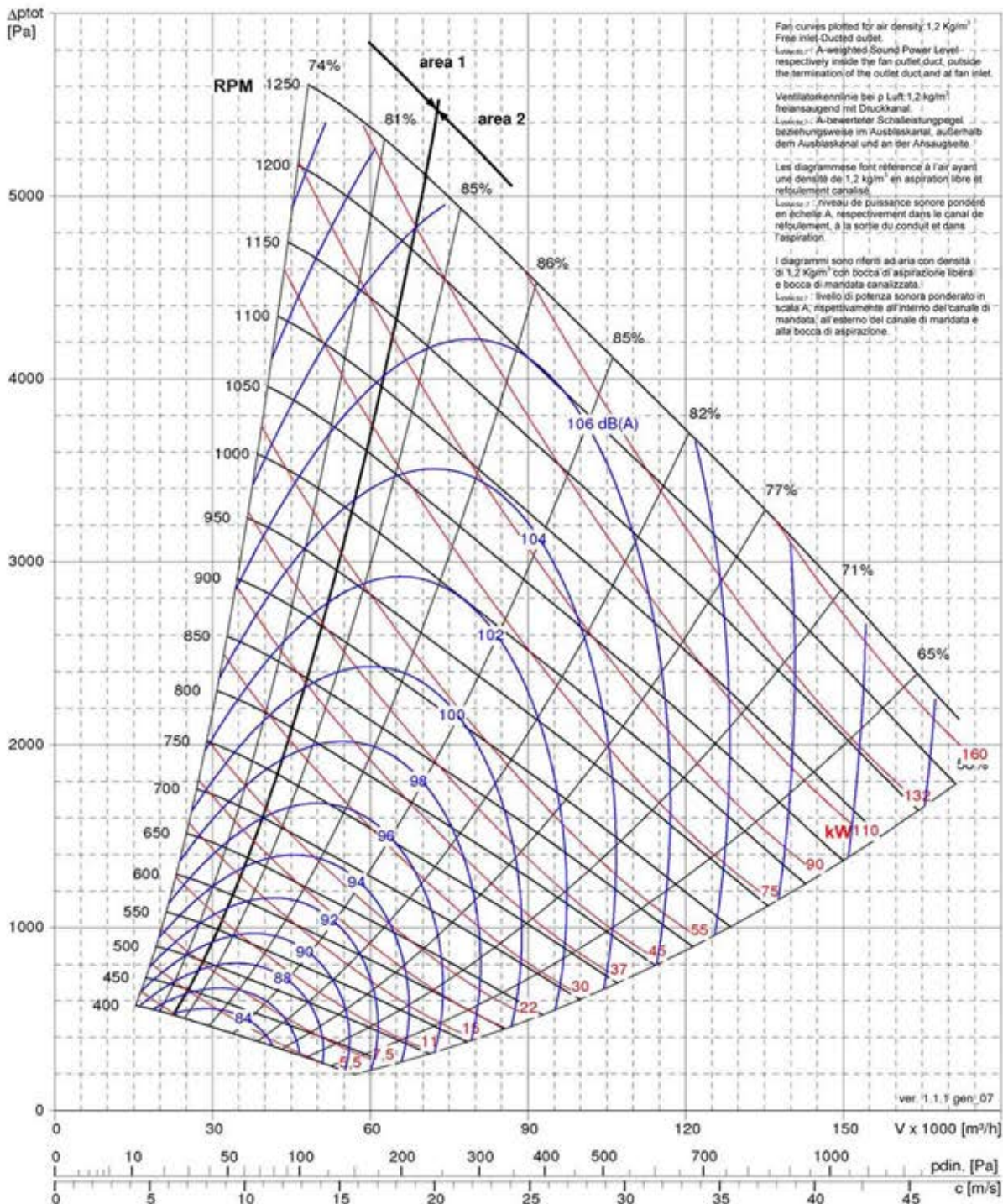


Technical Specification

ID Fan Model: HVLP-400

| BCE 17/1400 | | |
|---|----------------------|------|
| Fan Max RPM / Max zul. Ventilator Drehzahl / Vitesse de rotation maximale / Massima velocità di rotazione | [min ⁻¹] | 1230 |
| Fan Max power / Max zul. Ventilatorwellenleistung / Puissance absorbée maximale / Potenza massima assorbita | [kW] | 162 |
| Wheel diameter / Laufraddurchmesser / Diamètre de la turbine / Diametro della girante | [mm] | 1406 |
| Wheel No. Blades / Schaufelanzahl / Nombre d'aubes / N° di pale | z | 12 |
| Wheel Moment of Inertia / Laufrad Massenträgheitsmoment / Moment d'inertie de la turbine / Momento d'inerzia della girante | [kg m ²] | 86 |

© 2002 November 2013



ISO 9001 : 2015
Approval No : 0048394